



# Respond to John's College

BUILDING THE  
FUTURE



*Be part of it!*

# John's College, Waterford.

*Respond! purchased the derelict Johns College from the Diocese of Waterford & Lismore in 2007 and has worked tirelessly to transform it into a landmark facility for the care of the older person.*

*Respond! has spent €12 million to date on this ambitious project which will include 57 apartments, a 10 bed group home for people with specific needs and requirements and a Day Centre which will cater for the wider Waterford community.*





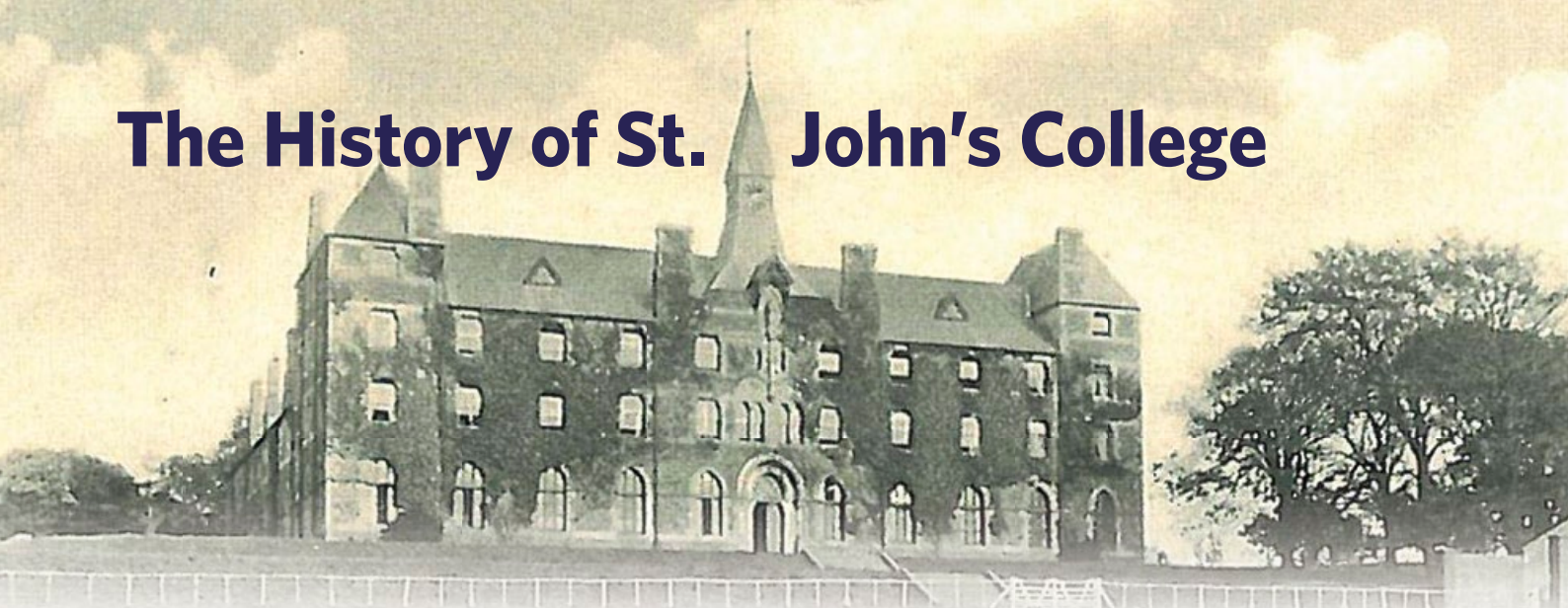
***"...to enable people to age with confidence, security and dignity in their own homes and communities for as long as possible"***

Goal 3 of the National Positive Aging Strategy 2013.





# The History of St. John's College



St. John's College was designed by the Architect George Goldie and opened in 1871. After over 100 years of use as a theological college, the building was vacated in 1990 and had lain empty until Respond! purchased it in 2007.

There was quite significant damage on the upper floors of this landmark Gothic Revivalist style building due to water ingress with outbreaks of dry rot, and deterioration throughout due to lack of heating.

Having purchased the building, Respond! went through a long planning process in its redesign as a facility for older persons principally. **It includes 21 new apartments in the college, with a 10-bed group home and a Day-centre. 36 new-build one-bed apartments are also being provided on the Folly-side.** The construction which began in March 2014 is expected to be completed by end-2015, ahead of schedule. So, the **final fit-out** of the building is underway with the help of the people of Waterford.

# Johns College Support Committee

## **Committee Members:**

**Philip O' Reilly**, National Co-ordinator of Services for Older People, Respond! (Chairperson)

**Alan Ryan**, Senior Manager, AIB Business Centre Waterford

**Dr. Abdul Bulbullia**, General Practitioner (retired)

**Susan Murphy**, Primary Care Lead, HSE

**Barbara Murphy**, Co-ordinator of Services for Older People, HSE

**Aidan Barrett**, Community Representative

**Catherine Power**, Community Representative

**Tom Power**, General Manager, Respond! Support

**Patrick Cogan ofm**, Founder Director, Respond!

A Support Committee has been set up to guide the final stages of the Johns College development. Respond! would like to acknowledge the expert advice and guidance we have received from the committee members especially in the area of developing essential services for Johns College.





# Fundraising for John's College

The total project costs of building John's College will come to €12 million. Some €8million of this will be made available in state mortgages to Respond! from Waterford City Council through the Department of the Environment, Community and Local Government.

The remaining €4million will be provided by Respond! of which some €2.25 million will come in a private borrowing initiative from AIB Bank.

**We are essentially fundraising to equip four key areas within the College which will be of huge benefit to the wider community in Waterford for many years to come.**

Over the last 33 years, Respond! has provided quality housing, education and support for older people and families in Waterford and throughout the country. We now need the help of the people of Waterford to make these essential facilities for the community a reality.

## How to donate:

### Johns College Fundraising Account

AIB, Lisduggan, Waterford.

**Sort Code:** 934 119

**A/C No.** 179 811 74

**BIC:** AIBKIE2D

**IBAN:** IE91 AIBK 9341 1917 9811 74

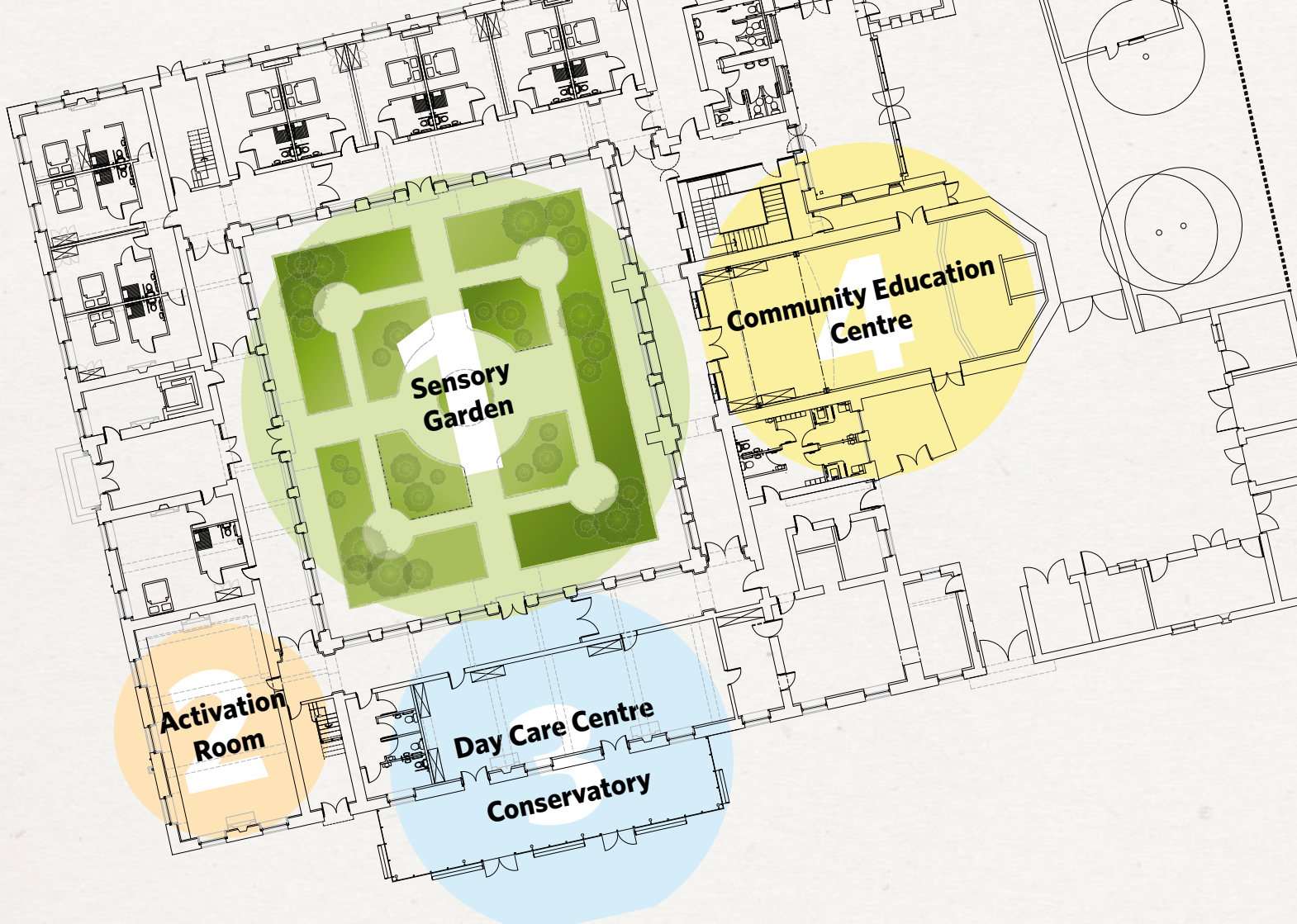


# How much will fit-out cost?

1 Sensory Garden	€15,000
2 Activation Room	€50,000
3 Day Care Centre/ Conservatory	€150,000
4 Community Education Centre	€150,000

***A big call to action!***





**Sensory  
Garden**

**Community Education  
Centre**

**Activation  
Room**

**Day Care Centre  
Conservatory**



# Four key areas for Fundraising

## ① Sensory Garden

The inner garden formally known as “Cloister Court” will be developed into a sensory garden where residents and Day Centre users will be able to congregate in a relaxed and friendly environment.

## ② Activation Room

The former lecture theatre and library will be developed into an activation room that will cater for Respond! tenants, Day Centre users and people from the wider community. Respond! has a strong record in delivering quality activation and socialisation programmes for older people in Waterford City and this room will be of huge benefit to the wider community.

## ③ Day Care Centre/Conservatory

The old Dining Room in John’s College will be transformed into a purpose built Day Care Centre with Conservatory that will cater for older people and people with specific needs and requirements. It is envisaged that the Day Centre will become a lively social hub catering for older people living on this side of the city as well as communities from east Waterford.

## ④ Community Education Centre

The Chapel and Gallery in the College remained largely intact and possess some of the finest stain glass windows in Ireland. This space will be developed into a state of the art Community Education Centre which will cater for groups up to 150 people.

# Similar Respond! Projects

## St Francis Terrace, Waterford



Formerly a Maternity Hospital, St Francis Terrace in Airmount, Waterford has 37 apartments that specifically cater for Older People and people with specific needs and requirements. It is also the main Respond! Headquarters with over forty staff based there. The complex also has a purpose built Day Centre currently managed independently by the Friends of Assisi House. One of the biggest highlights of St Francis Terrace is the adjoining Community Gardens, Allotments and Polytunnel which cater for the whole community and residents from nearby Respond! communities.

## Blackpool Day Centre

Respond! is delighted that we will be developing a state of the art Day Centre in John's College which will cater for the wider Waterford Community. As well as developing caring and sustainable communities for Older People, we also have a proud tradition and proven track record in developing high quality Day Centres in areas of need. Our flagship Day Centre in St Francis Gardens, Blackpool, Cork is undoubtedly one of the finest services in the country. The Day Centre is situated on the fifth floor, over-looking the north side of Cork City and has a roof garden where residents and service users can grow their own vegetables.





# Respond! growing from Waterford roots

Respond! was founded in 1981 from Franciscan sources. Concern for the hundreds of people on the long waiting lists for houses in 1981 was the spark that ignited Respond!. Three of the founding Directors, Jim Wallace, Michael O' Doherty and Patrick Cogan, ofm,



pictured with Brian Hennebry studied the work of other voluntary housing organisations such as the "Rural Housing Organisation" in Shannon, "Share" in Cork, "Catholic Housing Aid in Dublin and "Kilmoganny Co-operative in Kilkenny before deciding on the formula for Respond!. Respond! was incorporated in July 1982 as a Company limited by guarantee and with charity status. It was approved by the Department of the Environment under the regulations governing the Capital Assistance Scheme. Patrick Cogan, ofm, has managed the company since its inception.



*Respond! is eternally grateful to the people of Waterford and the staff of various companies who made generous donations at the time by direct debit.*



**Francis Court,  
Waterford was the  
first project, a pre-1984  
financial arrangement with the**

**local authority.** A 15-house scheme for older persons, with a community building, it was officially opened on the feast of St. Francis of Assisi, 4th October, 1983. The total cost was £300,000 of which £90,000 was received in voluntary donations. Extensive fundraising was carried out by dedicated volunteers at the time and volunteerism has remained at the very core of Respond's philosophy and work to date.

As of 2015 Respond! has provided over 5500 homes for people across the country of which 4000 are directly managed by the company.



# Respond!'s Work to Date: 1982 - 2015

## Housing Provision:

	<b>Estates:</b>	<b>Dwellings</b>	<b>In Current Management</b>
<b>Nationally:</b>	150	5,500	4,000
<b>Including Waterford:</b>	8	505	368
	(21 City: 7 County)	(345 City: 160 County)	(236 City: 132 County)

## Community Facilities:

	<b>Communal Buildings:</b>	<b>Childcare Centres</b>	<b>Children Attending</b>
<b>Nationally:</b>	81 + 34 Com Rooms	23	1,000+
<b>Including Waterford:</b>	7	4	100+

Respond!  
acknowledges the  
partnership that has  
been so fruitful with the  
Friends of Respond! Ennis  
and the Friends of  
Respond! Youghal

**Respond! Day-Centres:** 4 Nationally, 2 in Waterford and 2 in Kokstad/Hardenburg  
**Republic of South Africa:** 2 Clinics, 2 Centres for Orphan Support, 2 Training Centres  
2 Local Horticultural Initiatives, 1 Food Support Centre.



# AIB SUPPORTING BUSINESS



- Nonprofits • Social Housing • Social Entrepreneurs • Sustainability

Find out how we're supporting nonprofits

email: [non.profits@aib.ie](mailto:non.profits@aib.ie)

web: <http://business.aib.ie/help/nonprofit>





## Respond! Housing Association

Airmount, Dominick Place, Waterford.

**T** 0818 357 901

**T** 051 840200

**E** [info@respond.ie](mailto:info@respond.ie)

**W** [www.respond.ie](http://www.respond.ie)   

For more information on how you can help,  
please visit our website or contact  
Philip O'Reilly on 051 840 204.

### How to donate:

#### Johns College Fundraising Account

AIB, Lisduggan, Waterford.

**Sort Code:** 934 119

**A/C No.** 179 811 74

**BIC:** AIBKIE2D

**IBAN:** IE91 AIBK 9341 1917 9811 74

