

John's College

MISSION ACCOMPLISHED

Stage 1



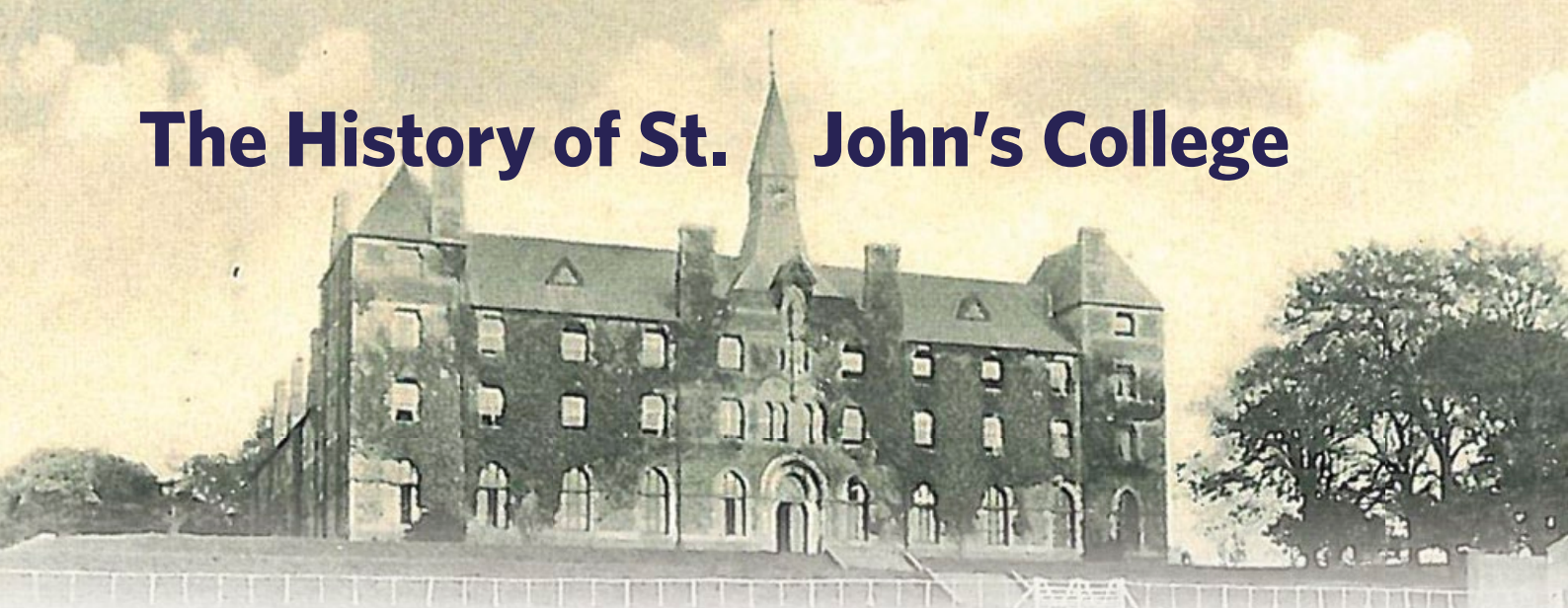
John's College, Waterford.

Respond! purchased the derelict Johns College from the Diocese of Waterford & Lismore in 2007 and has worked tirelessly to transform it into a landmark facility for the care of the older person.

Respond! has spent €12 million to date on this ambitious project which will include 57 apartments, a 10 bed group home for people with specific needs and requirements and a Café which will cater for the wider Waterford community.



The History of St. John's College



St. John's College was designed by the Architect George Goldie and opened in 1871. After over 100 years of use as a theological college, the building was vacated in 1990 and had lain empty until Respond! purchased it in 2007.

There was quite significant damage on the upper floors of this landmark Gothic Revivalist style building due to water ingress with outbreaks of dry rot, and deterioration throughout due to lack of heating.

Having purchased the building, Respond! went through a long planning process in its redesign as a facility for older persons principally. **It includes 21 new apartments in the college, with a 10-bed group home and a Café. 36 new-build one-bed apartments are also provided on the Folly-side.** The construction began in March 2014 and was completed in November 2015, ahead of schedule.



Community Facilities in John's College

Conference Centre

This church has been beautifully restored, paying due respect to its important historical past. It comprises of 1700 sq ft and is a unique setting for large groups of 100 – 150 people. It has been equipped with a high quality audio / visual system which supports the delivery of conferences, training to large groups, public meetings and art performances.

Activation Room

This multi-purpose room was previously the College Library and is the perfect setting for the delivery of Community Education programmes, training, meetings etc. It is 915 sq ft and can accommodate up to 75 people and is fully equipped with Wi-Fi, 55 inch plasma screen and PowerPoint facilities.

The Hub Café

As its name suggests, we envisage that this café, the former dining room will be the centre of Community activity within the building, with its attached conservatory, extending to 2010 sq ft, it will cater for community groups using the building and aims to deliver an intergenerational social space for the entire Community.

Similar Respond! Projects



Tailte an Chlochair,
Carrickmacross



Bridgefield Close, Curaheen, Cork



Childcare at Ard An Ghleanna,
Tramore,
Co. Waterford



St. Francis Terrace, Airmount, Waterford



**St Francis
Gardens,
Blackpool,
before**



**St Francis Gardens,
Blackpool, after**



**Gleann na Bearú,
Bagenalstown, Carlow**



Friary Gardens, Carrick on Suir



Respond! growing from Waterford roots

Respond! was founded in 1981 from Franciscan sources. Concern for the hundreds of people on the long waiting lists for houses in 1981 was the spark that ignited Respond!. Three of the founding Directors, Jim Wallace, Michael O' Doherty and Patrick Cogan, ofm,



pictured with Brian Hennebry studied the work of other voluntary housing organisations such as the "Rural Housing Organisation" in Shannon, "Share" in Cork, "Catholic Housing Aid in Dublin and "Kilmoganny Co-operative in Kilkenny before deciding on the formula for Respond!. Respond! was incorporated in July 1982 as a Company limited by guarantee and with charity status. It was approved by the Department of the Environment under the regulations governing the Capital Assistance Scheme.



Respond! is eternally grateful to the people of Waterford and the staff of various companies who made generous donations at the time by direct debit.



Francis Court, Waterford was the first project, a pre-1984 financial arrangement with the local authority. A 15-house

scheme for older persons, with a community building, it was officially opened on the feast of St. Francis of Assisi, 4th October, 1983. The total cost was £300,000 of which £90,000 was received in voluntary donations. Extensive fundraising was carried out by dedicated volunteers at the time and volunteerism has remained at the very core of Respond's philosophy and work to date.

As of 2016, Respond! has provided 5500 homes for people across the country of which 4009 are directly managed by the company.



Respond!'s Work to Date: 1982 - 2016

Housing Provision:

	Estates:	Dwellings	In Current Management
Nationally:	152	5471	4,009
Including Waterford:	29	574	437
	(22 City: 7 County)	(413 City: 161 County)	(286 City: 151 County)

Community Facilities:

	Communal Buildings:	Childcare Centres	Children Attending
Nationally:	81 + 34 Com Rooms	23	1,000+
Including Waterford:	7	4	100+

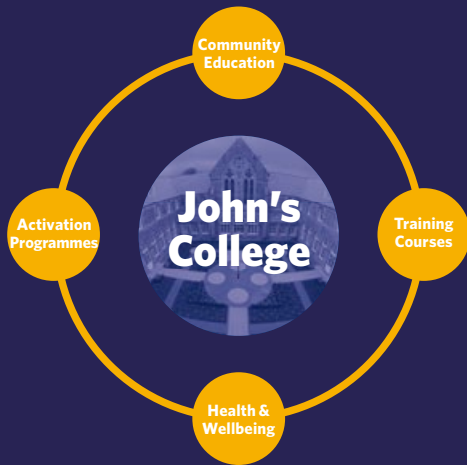
Respond! Day-Centres: 4 Nationally, 1 in Waterford and 2 in Kokstad/Hardenburg

Republic of South Africa: 2 Clinics, 2 Centres for Orphan Support, 2 Training Centres

2 Local Horticultural Initiatives, 1 Food Support Centre.

Respond!
acknowledges the
partnership that has
been so fruitful with the
Friends of Respond! Ennis
and the Friends of
Respond! Youghal





Stage 2

*Developing John's College as a **community hub** which facilitates the provision of **care and support** and the delivery of **education** to Respond! residents and the wider community.*






Respond!

Airmount,
Dominick Place,
Waterford.

T 051 840200

E info@respond.ie

W www.respond.ie   

RESPOND

Support

Care, Education, Family, Community

Respond Support Ltd

John's College
The Folly
Waterford

T 051 840200

E info@respondsupport.ie

W www.respondsupport.ie   