



ELANORA COURT

DRIMNAGH DUBLIN 12

MORE THAN JUST A PLACE TO LIVE

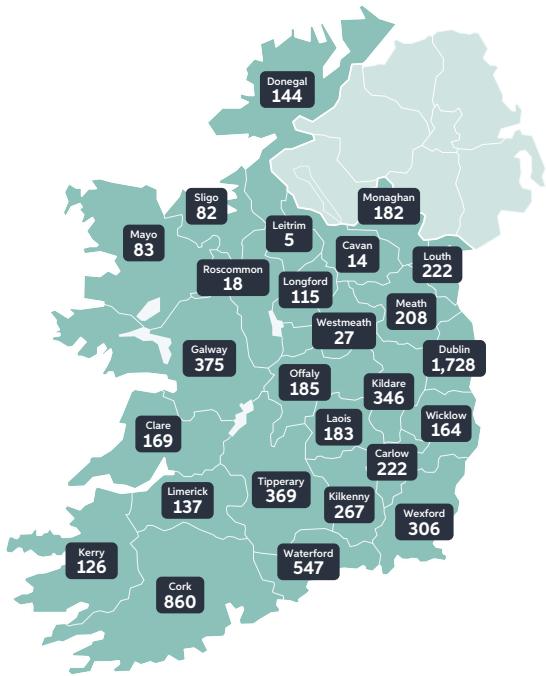


At Respond we believe in a human right to housing in a just and equal society. Elanora Court is our latest step in that direction.

INTRODUCTION

About Respond

Respond believes that everyone has the right to a secure, affordable home that meets their needs throughout their lifetime. All our initiatives focus on creating a more just and equal society, and a positive impact on the lives of the individuals, families and communities we serve.



REASONS TO BELIEVE IN RESPOND

Working for you

When it comes to delivering exceptional places to live, Respond are dedicated to providing high quality homes and creating thriving communities.

We are proud to share that, with over 16,400 tenants around the country, our tenant satisfaction rate stands at 92% and has improved year on year. This demonstrates our commitment to delivering a high-quality service that meets your needs and expectations.

“Respond really makes you feel as though you are part of a community. It is a brilliant environment to live in and we have never been happier. The tenant support is absolutely excellent and I would highly recommend Respond to everyone.”

TRACEY KELLEHER WHELAN,
RESPOND TENANT

“The bottom line is, there's nothing I will change from the set up and services we have. Thanks to Respond and their staff.”

ADAM DALMAR AND AAMINA CABDI,
RESPOND TENANTS



ELANORA COURT

Life on your doorstep

Elanora Court brings the concept of affordable living to a whole new level, with bright, well-designed modern homes located close to many great amenities. You'll find easy links to public transport close by alongside green spaces, supermarkets, schools, restaurants and cafes. It's the start of a vibrant and diverse community in a safe and secure neighbourhood that will enrich the lives of the people who live here for generations to come.



ELANORA COURT

Welcome to your new neighbourhood

As well as being superbly located, Elanora Court features homes built to a quality that is second to none. You'll find an on-site team that is committed to working with you to build real community spirit.



Quality First

Using a mix of high-quality brick, stone and metal cladding, the buildings are highly durable as well as visually attractive.

Location First

Head to the shops, grab a quick bite, catch a bus to town, or enjoy a walk in the nearby green spaces.

Community First

A unique opportunity to build a vibrant community from the ground up with a diverse group of people ready to work towards a successful future.

Service First

Our on-site community team is here to work with you to create the perfect environment and ensure that any issues are resolved in a timely manner.

COMMUNITY FIRST LIVING

Your new home, your community

Your ‘forever home’ at Elanora Court was designed to offer you spacious, modern living, and built with your comfort, safety and well-being in mind. Life here includes access to the beautiful landscaped gardens, seating and play areas, and an internal Community Hub where you can meet and relax.



We will also work with you to help decide how to best use this shared space and develop a programme of events based around the community that lives here. As part of this new community you'll find us always on hand to provide any support you need, and to make sure you feel that you can make your voice heard.

SUPPORTED COMMUNITY

Our commitment to you

We are committed to supporting you in every possible way, so always feel free to reach out. We will ensure that any issues that may arise are dealt with as soon as possible. We are always willing to go the extra mile to provide you with a great place to live, where you can enjoy peace of mind and a strong sense of community.



Alice Cuddigan
Community Support Worker

Alice is here to help build a vibrant community and create a safe and friendly environment by helping tenants in taking ownership of their community.

Elaine Dempsey
Tenant Relations Officer

Elaine is the point of contact for all state management queries and regularly checks in with tenants, as well as checking the estate for fire safety and compliance.

Niall Russell
Technical Services Officer

Niall handles all things maintenance, managing contractors and assisting the TRO with tenant queries around heating systems, general maintenance or fire safety.

Patrick Casserly
Facilities Caretaker

Patrick helps with the general maintenance, carrying out daily checks on the estate and advising tenants on minor maintenance issues.

Jackie Knight
Rent Control Officer

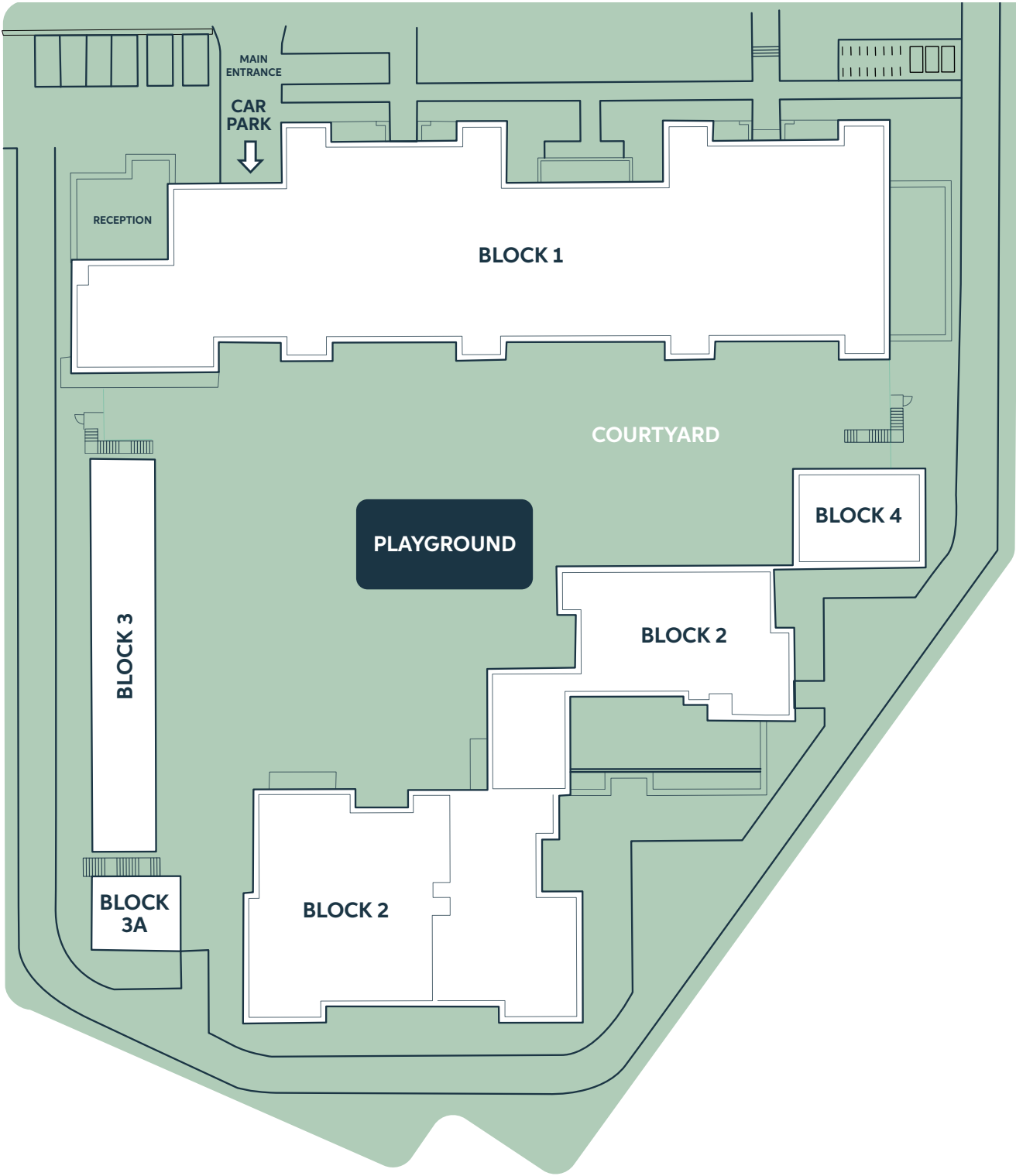
Jackie is here to assist you to set up automatic rent payments and deal with general rent related queries. She also carries out yearly rent reviews and assists people in rent distress.

SITE MAP

Site map

Thoughtfully designed around a generous central courtyard, Elanora Court combines a sense of space and community with the security and privacy of your own personal home, beautifully designed to fit your life.

Close to all amenities and well served by public transport it offers the perfect location for this exciting new phase of your life.



LOCALITY

Everything on your doorstep

Just moments away from bus routes including S4, 56a and 151, and a 15 minute walk from the nearest Luas red line stop, Elanora Court is surrounded by a great selection of shops, coffee shops, restaurants and take-aways as well as amenities such as Drimnagh Castle & Grounds.

By foot

- 1 mins to Energie Fitness

1 mins to Fujijama Izakaya

1 mins to Long Mile Road Pharmacy

3 mins to Little Tots Creche

4 mins to Drimnagh Castle School

5 mins to Boots
- 6 mins to Assumption National School

8 mins to Supervalu

8 mins to Thindi

11 mins to Mace

30 mins to Golden Bridge Luas

By bus/luas

- 8 mins to Walkinstown Medical Centre

10 mins to Lidl

10 mins to Crumlin Family Practice

11 mins to Polonez

15 mins to Drimnagh Boxing Club

15 mins to St John Bosco Youth Centre

By car

- 7 mins to Our Lady's Hospital for Sick Children

8 mins to Crumlin United FC

9 mins to Crumlin College

10 mins to Kiddies Korner Creche

11 mins to Dunnes Stores

11 mins to Good Counsel GAA & Camogie Club

17 mins to St James Hospital

- Supermarkets / Convenience Stores

1. Aldi

2. Mace

3. Polonez

4. Lidl

5. SuperValu

6. Tesco Express

7. Dunnes Stores
- Education

1. Assumption National School

2. Drimnagh Castle School

3. City of Dublin Adult Education Service

4. Crumlin College

5. Walkinstown Library
- Childcare

1. Little Tots Creche & Montessori

2. Daisy Chain Community Creche

3. Kiddies Korner Creche
- Medical

1. Crumlin Family Practice

2. Walkinstown Medical Centre

3. Primary Care Crumlin

4. Our Lady's Hospital for Sick Children

5. St James National Hospital

6. Long Mile Road Pharmacy

7. Haven Pharmacy McLaughlins

8. Boots

9. Haven Pharmacy Errigal

10. Johnson Pharmacy
- Sports

1. Swan Leisure Gym & Pool

2. Dublin Fit Club

3. Energie Fitness

4. Drimnagh Boxing Club

5. St John Bosco Youth Centre

6. St James Gaels

7. Good Counsel GAA & Camogie Club

8. Crumlin Utd FC

9. Lourdes Celtic FC
- Restaurants / Cafés / Takeaways

1. Eddie Rockets

2. Fujiyama Izakaya

3. Thindi Walkinstown

4. Pizza Hut

5. Ian's Kitchen

6. The Green Kitchen + Garden Shop

7. Deli-Licious

8. Flatcoffee



SPECIFICATIONS

Quality of the new build

Comprising 153 units with a mix of apartments, maisonettes and duplexes, Elanora Court makes maximum use of the available land. Its variation in height from 3 - 6 storeys creates an attractive visual effect and the fine quality of material used ensures homes that will last generations.

All our homes have an impressive A BER rating, making them highly efficient and environmentally friendly. You can enjoy the benefits of best value energy bills and a reduced carbon footprint while living in comfortable and modern surroundings.



Special features & specifications

External features

- High quality brick and render facades
- High-performance Alu-clad double-glazed windows with low U-Value for energy efficiency
- Engineered timber front door with multi-point locking system
- High quality Italian stone cladding
- High quality zinc cladding to the top floor apartments
- Cobblelock path to walkable areas and patio areas
- Landscaped communal garden at podium level

Security & Safety

- Smoke detectors fitted throughout (mains powered with battery backup)
- Safety restrictors provided on all windows
- Secure undercroft car-parking
- Fob access to gates and main door access

Media & Communications

- Wired for high-speed broadband (Cat 6)
- Telephone/data points in living room
- Main infrastructure installed to accommodate Siro and Virgin

Energy efficiency

- A2 BER energy rating
- Highly insulated airtight design
- High levels of roof, wall, and floor insulation
- Heat pump with dual zone controls
- Internal pipe insulation to reduce heat loss
- Energy saving LED light fittings

Heating

- Exhaust Air Heatpump system using panel radiators
- Pressurised hot & cold water
- Time and temperature zone controls



Electrical

- Generous provision of lighting and power points
- Charging points in undercroft parking area

Bathrooms & Ensuites

- High quality tiling to floors and wet areas in bathroom and ensuite
- Contemporary shower enclosure, complete with pressurised water supply and fitted shower doors
- Heated towel rails in bathrooms and ensuites
- High quality sanitary ware

Kitchens

- Contemporary designed kitchens
- Stainless steel sink and mixing tap

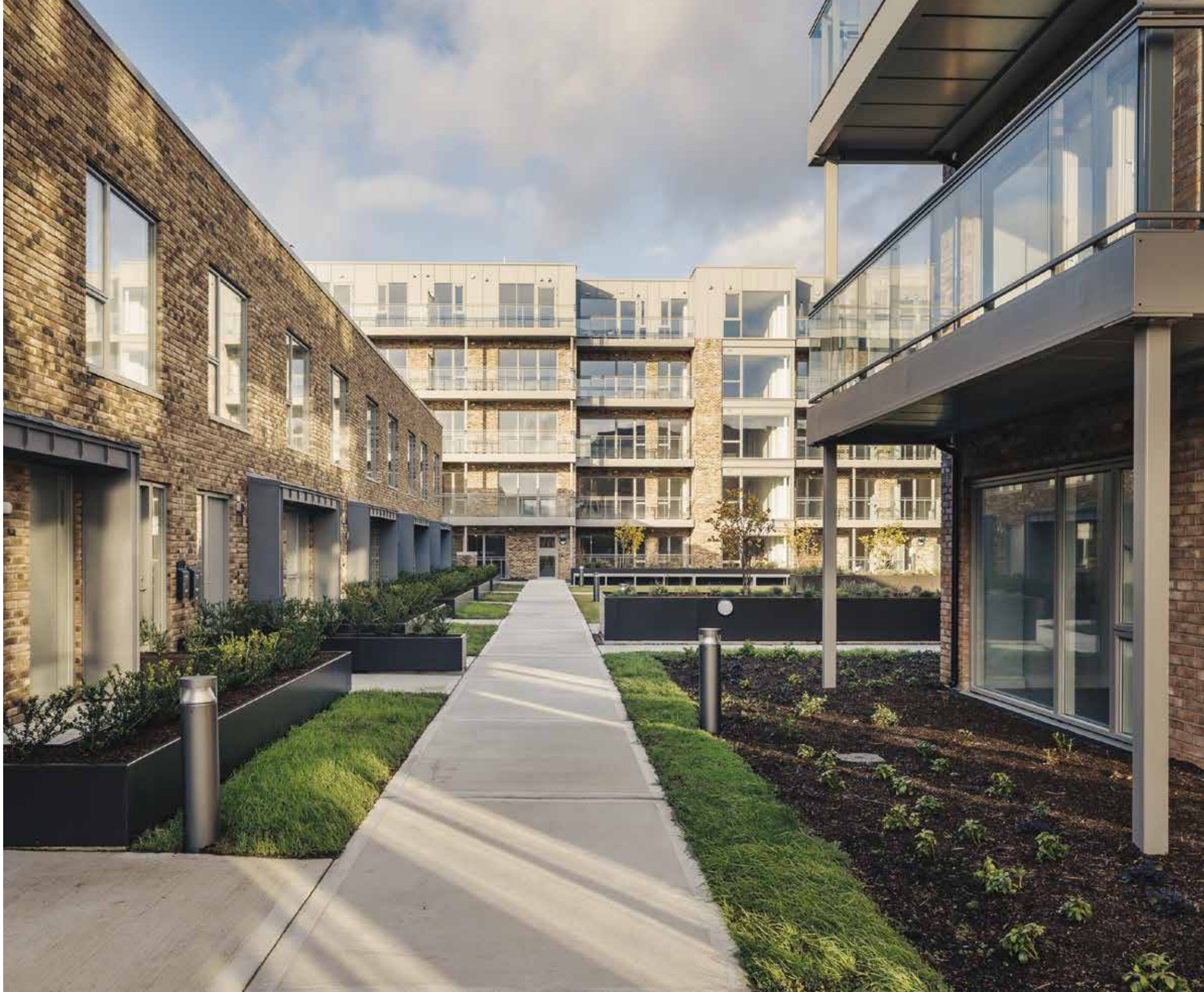


Wardrobes & Storage

- Fitted wardrobe in all bedrooms

Interior Finishes

- Neutral colour painting
- Extra height ceilings at ground floor
- High quality painted doors
- Contemporary grooved architrave and skirting
- Brushed satin finish ironmongery
- Superior quality internal joinery
- Secured undercroft parking
- Lift access to apartment blocks



We want to hear from you

At Elanora Court, your voice matters. Respond are committed to working in partnership with tenants to identify the services that are best suited to meet tenant and local needs. Your satisfaction and wellbeing are our priority and we encourage you to engage with the Elanora Court team. Together, we will create a thriving community where you can truly feel at home.

You can contact Respond's **Customer Service Centre** where we have a full service **weekdays 9am-5pm on 01-808 7700**.

Outside of these hours, you will be transferred to our emergency out of hours service.

Welcome to
Elanora Court...
more than just a
place to live.



respond

building homes,
improving lives

High Park,
Grace Park Road,
Drumcondra,
Dublin 9,
D09 N2N7

Airmount,
Dominick Place,
Waterford,
X91 A397

01 808 77 00
info@respond.ie
respond.ie